

ENGINE TRAILER

Manufactured by **DUO LIFT** Mfg. Co., Inc.



Trailer Frame



ET440D Engine Trailer (D.O.T. Compliant)



ET240 Engine Trailer

Standard Features - ET240D and ET440D D.O.T. Models:

Trailer Frame: 9" Formed Channel Tank Support Frame 4" x 3" Tubular Front A-Frame	Engine & Pump Support System: (3) Bolt-On Multi-Position Engine Supports and (1) Pump Support
Diesel Fuel Tank: 200 Gallon (ET240D) or 400 Gallon (ET440D), Bolt-In, Bottom Mounted Diesel Tank, Dial Type Fuel Gauge, Front 3" Fusible Fill Vent Cap, Rear 3" Fill Cap, 2" Stainless Steel Tank Vent, Diesel Tank Drain Port, (1) 1/2" NPT Diesel Fuel Supply Port with Suction Tube, Capped, (1) 1/2" NPT Diesel Fuel Return Port, Capped	Fenders: Heavy Duty Flat Top Steel Fenders with Anti-Slip Surface and Black Splash Guards
Provision for DEF: Frame will Accommodate Optional Bolt-In 40 Gallon Diesel Exhaust Fluid Tank	Hitch: 2-5/16" Adjustable Height Ball Coupler with (2) 3/8" Safety Chains and ID Tags
Suspension: Highway Rated Axles with Under-Slung Slipper Springs	Color: <u>Trailer:</u> White <u>Tank:</u> White <u>Axles:</u> Black
Wheels: 15" x 6" x 6-5.5" White Spoke Wheels (ET240D) 16" x 6" x 8-6.5" White Spoke Wheels (ET440D)	Lights: D.O.T. LED Lights Conforming to CFR49 All Wiring Joints Soldered, Shrink-Wrapped and Enclosed in Conduit or Loom
Tires: 225/75R15D (ET240D), 235/80R16E (ET440D)	Other: (2) Frame Mounted Level Indicators, Tool Box Support, Conspicuity Tape, Safety Signs, Duo Lift Decals, 17 Digit VIN ID Plate and Manufacturers Statement of Origin and Manual Holder.
Brakes: 4-Wheel Electric Brakes with Breakaway Kit	Misc.: 1-Year Component Warranty 5-Year Tank(s) and Trailer Frame Warranty Annual Federal Inspection and Certificate
Jack Stands: 8,000 Lb. Side-Wind, Drop Leg, (1) Tongue Jack, (2) Rear Frame Jacks	

Standard Features - ET240 and ET440 OFF ROAD Models:

Trailer Frame: 9" Formed Channel Tank Support Frame 4" x 3" Tubular Front A-Frame	Engine & Pump Support System: (3) Bolt-On Multi-Position Engine Supports and (1) Pump Support
Diesel Fuel Tank: 200 Gallon (ET240) or 400 Gallon (ET440), Bolt-In, Bottom Mounted Diesel Tank, Dial Type Fuel Gauge, Front 3" Fusible Fill Vent Cap, Rear 3" Fill Cap, 2" Stainless Steel Tank Vent, Diesel Tank Drain Port, (1) 1/2" NPT Diesel Fuel Supply Port with Suction Tube, Capped, (1) 1/2" NPT Diesel Fuel Return Port, Capped	Fenders: Heavy Duty Flat Top Steel Fenders
Provision for DEF: Frame will Accommodate Optional Bolt-In 40 Gallon Diesel Exhaust Fluid Tank	Hitch: Pin-On Adjustable Height Clevis Hitch, Accepts 1" Hitch Pin (2) 3/8" Safety Chains and ID Tags
Suspension: Idler Axles, Under-Slung Slipper Springs	Color: <u>Trailer:</u> White <u>Tank:</u> White <u>Axles:</u> Black
Wheels: 15" x 6" x 6-5.5" White Spoke Wheel (ET240D) 16" x 6" x 8-6.5" White Spoke Wheel (ET440D)	Lights: AG Transport LED Lights, All Wiring Joints Soldered, Shrink-Wrapped and Enclosed in Conduit or Loom
Tires: 225/75R15D (ET240D), 235/80R16E (ET440D)	Other: (2) Frame Mounted Level Indicators, Tool Box Support, SMV Emblem, Safety Signs, Duo Lift Decals, Manual Canister, Amber and Red AG Reflective Tape.
Brakes: None	Misc.: 1-Year Component Warranty 5-Year Tank(s) and Trailer Frame Warranty Ag Trailer Serial Number
Jack Stands: 8,000 Lb. Side-Wind, Drop Leg, (1) Tongue Jack, (2) Rear Frame Jacks	

DUO LIFT Manufacturing Company, Inc.

2810 38th Street • Columbus, Nebraska 68601

Phone: 402-564-8023 • FAX: 402-564-5385

Toll Free: 1-800-243-2583

Email: sales@duolift.com • Website: www.duolift.com

Authorized Dealer:



ET440

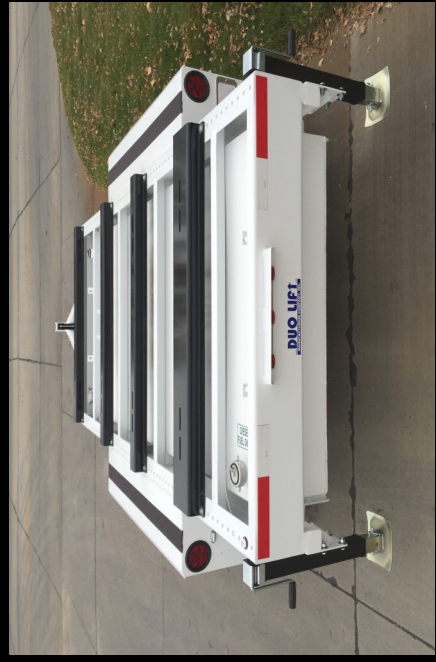
ET440
with Storage
Box Option



ET440D with 400 Gallon Diesel Tank and
Optional 40 Gallon DEF Tank



ET440D Diesel Tank Fittings and Optional
DEF Tank Fittings



ET440D

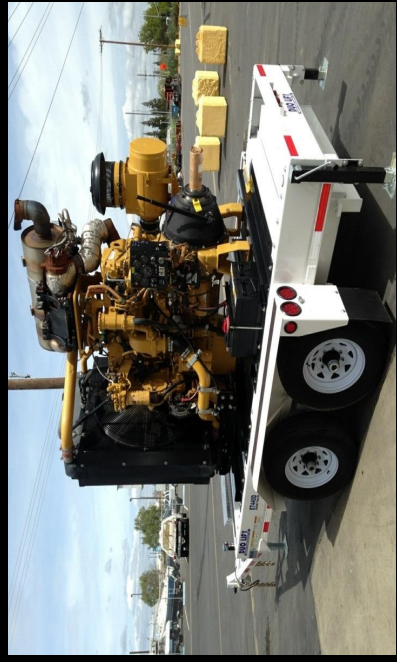
ET440D
Removable
400 Gallon
Diesel Tank
with
3" Rear
Fill / Auxiliary
Port



ET440D Multi-Position Engine and
Pump Mounts



ET240



ET440D with 6 Cylinder Diesel Engine